

Federal Communications Commission (FCC) Radio Frequency Interference Statement Warning

Changes or modifications to this unit not expressly approved by the party responsible for compliance could void the user's authority to operate the equipment.

Note

This equipment has been tested and found to comply with the limits for a Class B digital device, pursuant to Part 15 of the FCC Rules. These limits are designed to provide reasonable protection against harmful interference when the equipment is operated in a commercial environment. This equipment generates, uses, and can radiate radio frequency energy and, if not installed and used in accordance with the instruction manual, may cause harmful interference to radio communications. Operation of this equipment in a residential area is likely to cause harmful interference in which case the user will be required to correct the interference at his own expense.

Information to the User

This equipment must be installed and used in strict accordance with the manufacturer's instructions. However, there is no guarantee that interference to radio communications will not occur in a particular commercial installation. If this equipment does cause interference, which can be determined by turning the equipment off and on, the user is encouraged to contact CognitiveTPG immediately.

CognitiveTPG is not responsible for any radio or television interference caused by unauthorized modification of this equipment or the substitution or attachment of connecting cables and equipment other than those specified by CognitiveTPG. The correction of interferences caused by such unauthorized modification, substitution or attachment will be the responsibility of the user.

In order to ensure compliance with the Product Safety, FCC and CE marking requirements, you must use the power supply, power cord, and interface cable which are sold for use with this product or which meet the following parameters:

Power Supply

UL Listed (QOQG), Class 2 power supply with SELV (Secondary Extra Low Voltage), non-energy hazard output, LPS (limited power source), input rated 100-240 Vac, 2.0 A, 50/60 Hz, output rated 24 Vdc, 2.5 A for 60 watt unit.

Use of this product with a power supply other than the CognitiveTPG power supply will require you to test the power supply and CognitiveTPG printer for FCC and CE mark certification.

Communication Interface Cable

A shielded (360 degree) interface cable must be used with this product. The shield must be connected to the frame or earth ground connection or earth ground reference at EACH end of the cable.

Use of a cable other than described here will require that you test the cable with the CognitiveTPG printer and your system for FCC and CE mark certification.

Power Cord

A UL listed, detachable power cord must be used. For applications where the power supply module may be mounted on the floor, a power cord with Type SJT marking must be used. For applications outside the US, power cords which meet the particular country's certification and application requirements should be used.

Use of a power cord other than described here may result in a violation of safety certifications which are in force in the country of use.

Industry Canada (IC) Radio Frequency Interference Statement

This Class B digital apparatus meets all requirements of the Canadian Interference-Causing Equipment Regulations.

Cet appareil numérique de la classe B respecte toutes les exigences du Règlement sur le matériel brouilleur du Canada.

Voluntary Control Council for Interference (VCCI) Radio Frequency Interference Statement

This is a Class B product based on the standard of the Voluntary Control Council for Interference by Information Technology Equipment (VCCI). If this equipment is used in a domestic environment, radio disturbance may arise. When such trouble occurs, the user may be required to take corrective actions.

Disclaimer

Information in this document is subject to change without notice. Consult your CognitiveTPG sales representative for information that is applicable and current. CognitiveTPG reserves the right to improve products as new technology, components, software, and firmware become available.

No part of this document may be reproduced, transmitted, or translated in any form or by any means, electronic or mechanical, for any purpose without the express written permission of CognitiveTPG.

Copyright

Copyright © 2017 by CognitiveTPG, LLC, 950 Danby Road, Ithaca, New York 14850, USA. All rights reserved. Printed in USA. Property of CognitiveTPG, LLC.

Trademarks

CognitiveTPG™ is a trademark of CognitiveTPG, LLC.

Microsoft, Windows NT are registered Trademarks of Microsoft Corporation in the U.S.A. and/or other countries.

Inside Out Networks, Inside Out, EPIC, and Edgeport are trademarks of Inside Out Networks.

All other trademarks and registered trademarks are the property of their respective holders.

Website

<http://www.CognitiveTPG.com>

A798II Thermal Receipt Printer Setup Guide

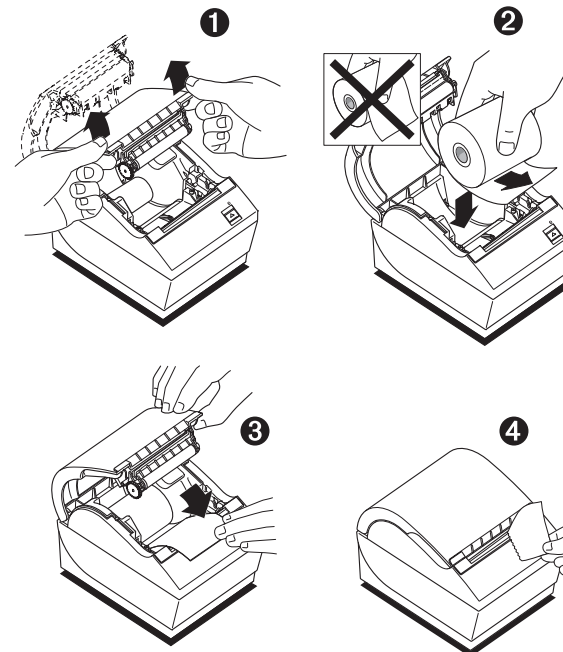
Thank you for selecting **CognitiveTPG Model A798II Monochrome Single Station Thermal POS Receipt Printer**
WORLD CLASS PRINTING... AND VALUE!

You have chosen the industry's best value in receipt printers. A798II combines sharp, high speed monochrome printing with unsurpassed durability.

Please review this Setup Guide and visit www.CognitiveTPG.com > **Support > Drivers & Downloads** to find the latest printer drivers, software, and documentation, including the the A798II User Guide and A798II Programming Guide. If you have any questions, please call us at **800-732-8950** or **607-274-2500** or visit www.CognitiveTPG.com. Please visit the website's Warranty Registration section to register your printer and provide feedback on its quality.

Setting up the printer (Pages referenced are from the User Guide)

- 1 Unpack the printer, saving all packing materials for future shipping or storage (page 11).
- 2 Load the roll of paper (page 12).



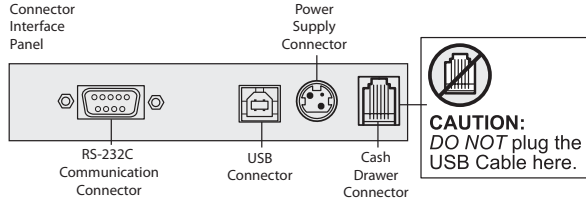
Made under one or more of the following U.S. patents: 4886381, 5579043, 5613787, 5651624, 5713678, 5752779, 5789916, 5800080, 5879090, 5887999, 5975776, 6027266, 6085973, 6089450, 6129465, 6155483, 6404452, 6486902, 6504331, 5749277, 6722754, 6739773, 6784909. Other U.S. and international patents pending.


COGNITIVE TPG

3 Choose a location for the printer.

4 Connect the following cables based on your configuration, using a-b below.

When using USB (step "b" below), use caution to ensure the **USB cable is connected to the USB connector on the back left of the printer** and not into the cash drawer connector that is on the back right of the printer.

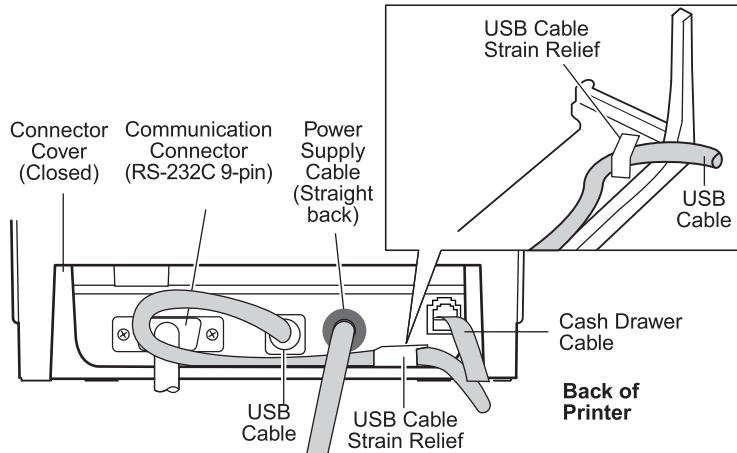


a Cash drawer (if your installation includes this feature, page 15).

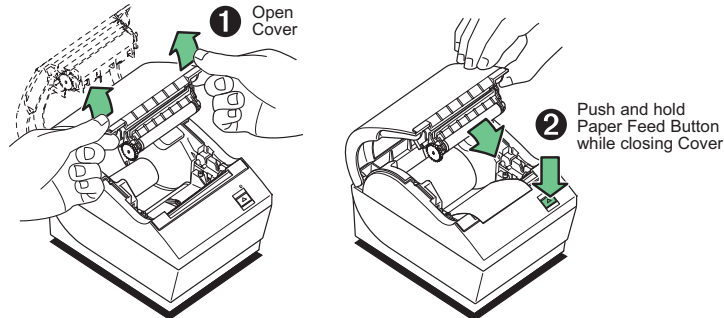
b 9-pin or 25 pin Serial or USB cable (serial: page 16; USB: page 17).

c Connect the power cable (page 18).

d Route cables as shown for your setup configuration (page 19).



5 Run a diagnostic test (page 19).



6 Configure the printer if necessary (page 20).
Power on printer while holding down the receipt feed button to enter Config Menu

*** A798II - Diagnostics Form ***

Model number : A798-780X-TD00
 Serial number : 000000000
 Loader Firmware P/N : P/N#: 189-799L111
 Date : Nov 10 2015
 Flash Firmware Revision : V1.46
 CRC : 9701
 P/N : 189-798A146B

H/W parameters
 Flash Memory Size : 8 Mbytes
 Flash Logos/Fonts : 1600 kbytes
 Flash User Storage : 576 kbytes
 Flash Perm't Fonts : 2240 kbytes
 Flash Journal Size : 640 kbytes
 SRAM Size : 512 kbytes
 Head setting : H
 Motor ID : 1
 Paper Type Setting : Type 0, Monochrome
 Color Density Adj : n/a
 Print Density, Mono : 100%
 Max Speed : 180 mm/sec
 Paper Width : 80 mm
 Max Power : Level 1
 Knife : Enabled
 Partial Cut : 135 steps
 Paper Low Sensor : N/A
 No Paper Low Extension

Comm. Interface : USB
 Interface : USB
 RX Buffer Size : 4096
 USB Driver Type : Printer Class
 Interface : RS232
 RX Buffer Size : 4096
 Parameters
 Baud Rate : 115200
 Data Bits : 8
 Stop Bit : 1
 Parity : NONE
 Flow Control : DTR/DSR
 Reception Errors : Ignore

Resident Code Pages : 437, 720, 737, 775, 850, 852, 857, 858, 860, 862...

To Enter Printer Config Menu
 Press Feed Button Within the Next Two Seconds

***** MAIN MENU *****

- Select a sub-menu :
- EXIT -> 1 click
 - Print Current Configuration -> 2 clicks
 - Set Communication Interface -> 3 clicks
 - Set Diagnostics Modes -> 4 clicks
 - Set Emulation/Software Options -> 5 clicks
 - Set Hardware Options -> 6 clicks
 - Set Paper Type -> 7 clicks
 - Set Firmware Features -> 8 clicks

Enter code, then hold Button DOWN at least 1 second to validate

When the printer is configured for USB, this location will show either: "USB Driver Type: Printer Class", or "USB Driver: Comm Class".

Print Test and Configuration Menu Sample. Samples will vary depending on the printer model.

Current Printer tallies are printed after the Diagnostic information and will vary per printer use.

EU Declaration of Conformity

In accordance with EN ISO 17050-1:2010

Object of the Declaration:
 Product: Thermal Receipt Printer
 Model: A798-XXXX-XXXX
 Manufacturer: CognitiveTPG, LLC
 Address: 950 Danby Road, Suite 200, Ithaca, NY 14850 USA

This declaration is issued under the sole responsibility of the manufacturer

The object of the declaration described above is in conformity with the relevant Union harmonization legislation:
 2014/35/EU The Low Voltage Directive
 2014/30/EU The Electromagnetic Compatibility Directive
 2011/65/EU The Restriction of Hazardous Substances Directive

Conformity is shown by compliance with the applicable requirements of the following documents:
Harmonized Standards:
 EN 50581:2012 Technical documentation for the assessment of electrical and electronic products with respect to the restriction of hazardous substances
 EN 55024:2010 Information Technology Equipment Immunity Characteristics
 EN 55022:2010/AC:2011 EMC, Class B, Limits and Methods of Measurement of Interference Characteristics of IT Equipment
 EN 60950-1:2006 + A11:2009 + A1:2010 + A2:2011 + A2:2013
 IEC 60950-1 (ed.2)am2- Product Safety Standard.
 Signed for and on behalf of: CognitiveTPG, LLC

Place of Issue: Ithaca, NY USA
 Date of Issue: 5/27/2016
 Name: Jeffrey C Phoenix
 Position: Compliance engineer
 Signature: